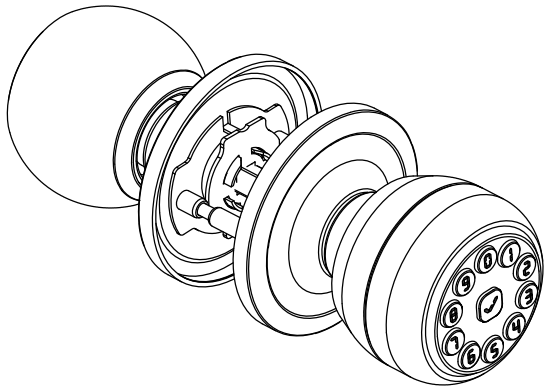


WREO

Installation Guide



User Manual

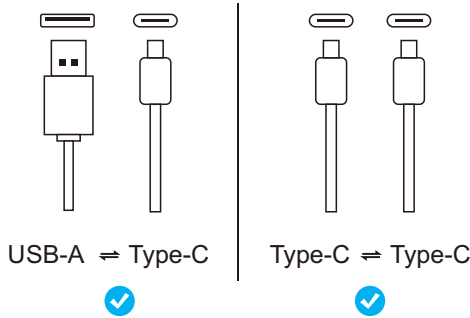
Please send an email with the title "K10mini Installation Video" and the Order Number to [service@wreolock.com](mailto:service@wreolock.com)

Model : K10mini

Warm Tips:

- ① Please check the size of the door and latch carefully before installation.
- ② This lock comes with a built-in rechargeable battery. Before installation, please recharge the lock for at least 3 hours.
- ③ Please use manual screw driver to install, electric screw driver is not recommended.
- ④ If the door knob appears to be damaged or does not operate properly, please contact customer service for further assistance. Email: [service@wreolock.com](mailto:service@wreolock.com)
- ⑤ It is better to keep at least one key in a secure location as an extra precaution.
- ⑥ In initialization state, any 4 to 16 digit password can unlock.
- ⑦ When you enter an incorrect password, the "√" button will flash red for 2 seconds and the buzzer will beep twice, you can not re-enter the password within 2 seconds.
- ⑧ If input a wrong password of more than 4 digits for 10 times, the system will be locked for 2 minutes.
- ⑨ It can not delete a single password, only initializes and delete all users.

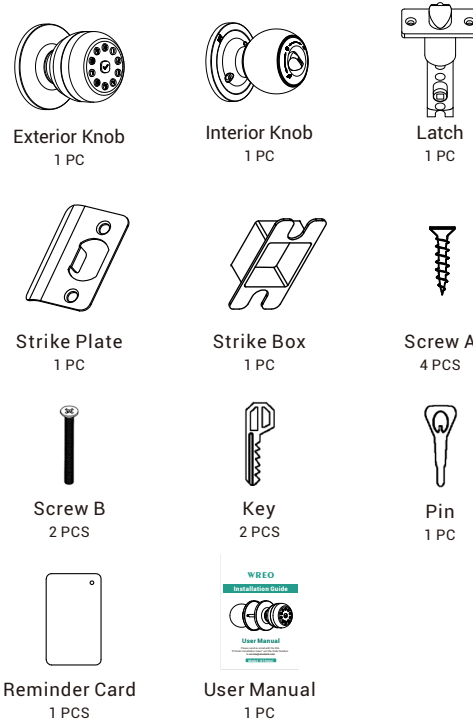
Part 1 Battery Charging



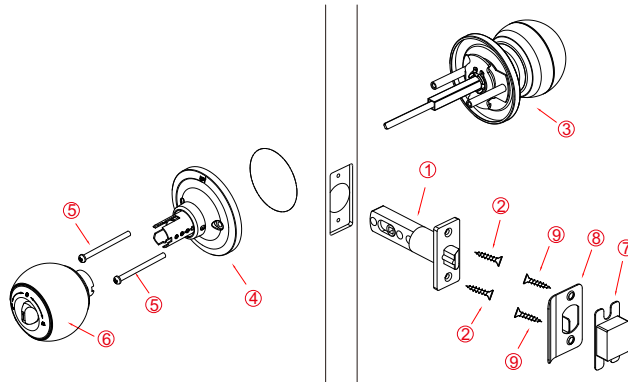
- 1.Please use the charging cable for charging or for an emergency power supply. It can be recharged with a portable power supply when you close your door.
- 2.This lock comes with a built-in rechargeable battery.
- 3.Before installation, please recharge the lock for 3-4 hours.

Part 2 Packing list

Before installation, please check carefully whether the package includes the above items. If there is any item missing, please contact Customer Service. Email: [service@wreolock.com](mailto:service@wreolock.com)



Part 3 Installation Overview

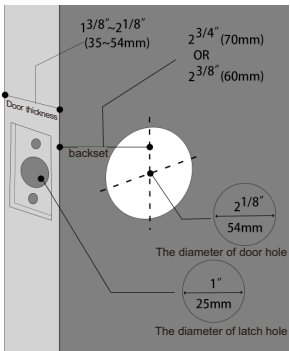


①	Latch
②	Screw A
③	Exterior Knob
④	Rosette
⑤	Screw B
⑥	Interior Knob
⑦	Strike Box
⑧	Strike Plate
⑨	Screw A

Part 4 Installation Guide

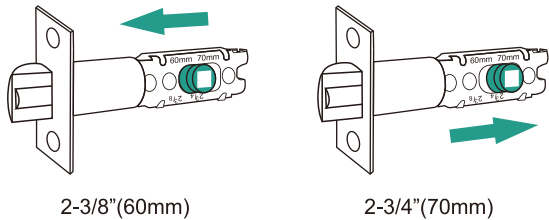
Step 1 . Preparing Door

Check the door's dimensions.



Step 2 . Adjust Latch Backset (If needed)

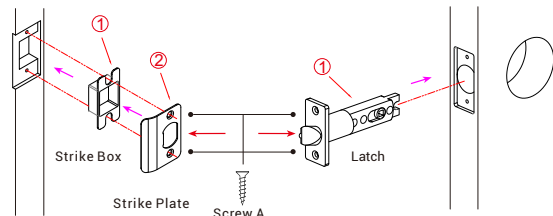
Measure your door backset, then adjust to the corresponding latch length.



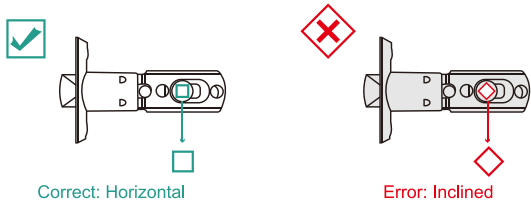
Press the square-shaped hole and pull the latch to set the latch backset to 60mm(2-3/8")or 70mm(2-3/4") to fit your door hole.

Part 4 Installation Guide

Step 3 . Install Latch



- 1.Insert the latch into the door hole, and tighten Screw A to fix the latch.
- 2.Install strike box and strike plate with screw A into the door frame.



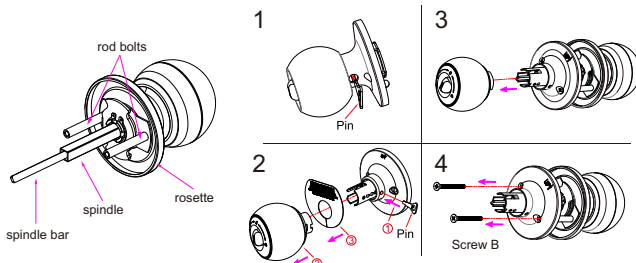
Attention

Check latch's status:

The square hole must be horizontal , otherwise it will get stuck!

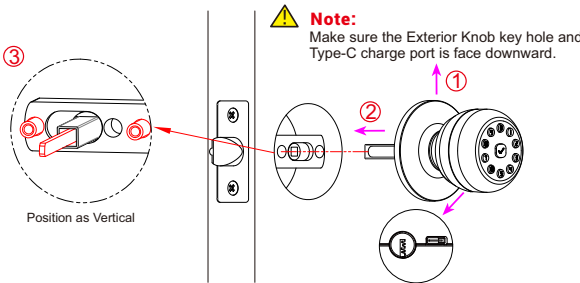
Part 4 Installation Guide

Step 4 . Pull out the Interior Knob



- 1.As the left figure shows, insert the pin into the hole and separate the rosette from the Interior Knob.
- 2.Then use a screwdrive to remove the screw B.

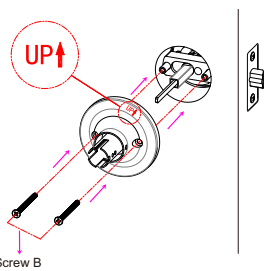
Step 5 . Install the Exterior Knob



As shown left, install the Exterior Knob onto the door with the rod bolts going through the circular holes on the Latch, and spindle going through the square-shaped(center)hole.

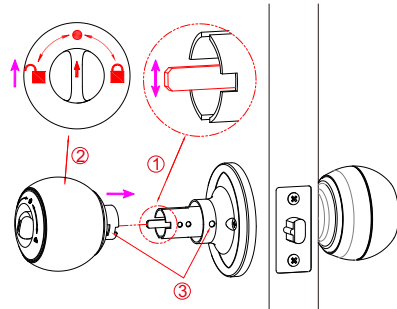
Part 4 Installation Guide

Step 6 . Install the Interior Knob



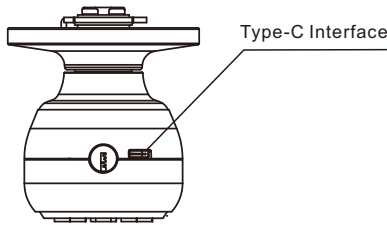
The "up" mark above the rosette should face upward.

- 1.Install the rosette onto the door with the rod bolts aligning the circular holes and spindle aligning the square-shaped (center)hole.
- 2.Then insert the Screw B into the circular holes and tighten them to secure the rosette.



- 1. Make sure the spindle bar is in the vertical position as shown left.
- 2. Rotate the thumb turn to the circular mark.
- 3. Insert the Interior Knob into the rosette by aligning the hole of Interior Knob with the spindle bar and aligning the rectangular hole at the edge of the interior knob with the circular hole at the edge of the rosette.

Part 5 Operation Guide



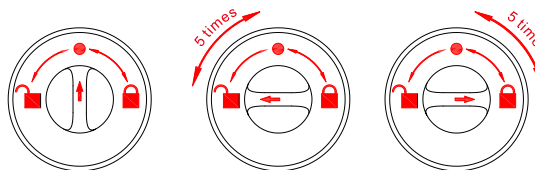
Key To Unlock

Insert the key into the keyhole at the edge of the Exterior Knob and turn key 90°to the unlock, then turn the Exterior Knob to open the door.

Low Power Indication

After being unlocked by passwords successfully, it is time to recharge the lock when the buzzer beeps twice and the password buttons flash green and then flash red. Connect a power bank to the type-c interface on the knob for charging.

**Note:** Charging before using this product, the tick button flashes blue when charging and flashes green when fully charged.



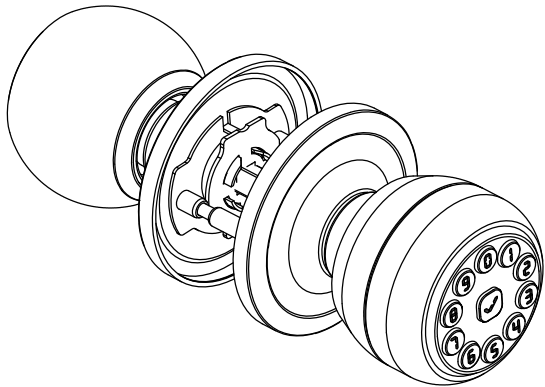
Restore the Factory Setting

**Method 1 (by thumb turn):** Rotate the thumb turn from the circular mark to the unlock sign on the right and then return the thumb turn to the circular mark, after repeating this operation 5 times, conduct the same operation towards the II for 5 times. After that, you will hear the long beep and the tick button flashes green.

**Method 2 (by password):** Press digit "4" button and the tick button once. Then input the administrator passwords and also press "√" once, after that the buzzer will long beep and the tick button will flash green that means restore the factory setting successfully.

WREO

Operation Guide

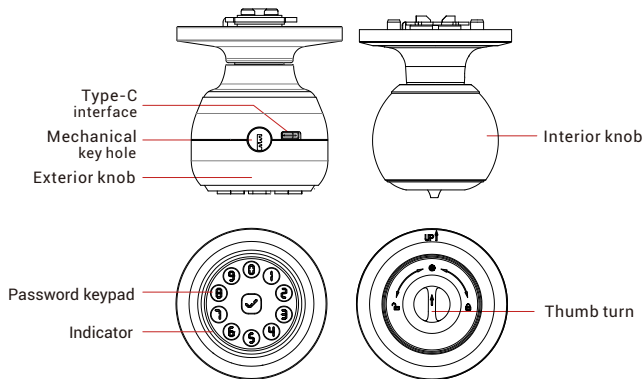


User Manual

Please send an email with the title "K10mini Installation Video" and the Order Number to [service@wreolock.com](mailto:service@wreolock.com)

Model : K10mini

Part 1 Product Description



Anti-peep Keypad

Used to enter the code and unlock from outside.

Keyhole

Used to insert key to unlock in emergency situations.

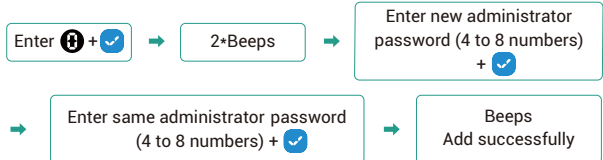
Light indications:

- 1. -Wating Process
- 2. -Successful Entry
- 3. -Incorrect Entry or Low Battery

Part 2 Setup Guide

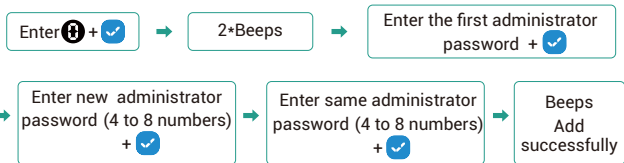
1.Add Administrator Password

Passwords maximum capacity(admin): 3 groups  
Password length(admin): 4 to 8 digits



**Note:**  
The first administrator password needs to be set in the initial state, if the lock is not in the initial state, reset the lock and then enter the first administrator password.

2.Add Other Administrator Password

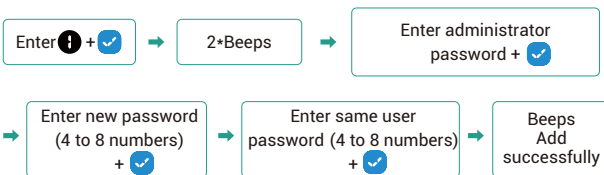


**Note:**  
1.If "✓" button flashes red after finish above steps, you need to re-enter the passwords.  
2.Before add second or third administrator passwords, it needs to verify the first administrator passwords.  
3.In initialization state, any 4-to16-digit password can unlock.  
4.When you enter an incorrect password, the "✓" button will flash red for 2 seconds and the buzzer will beep twice, you can not re-enter the password within 2 seconds.

Part 2 Setup Guide

3.Add User Passwords

Passwords maximum capacity(user): 17 groups  
Password length(user): 4 to 8 digits



**Note:**  
1.If "✓" button flashes red after finish above steps, you need to re-enter the passwords.  
2.Before add multiple user passwords, it needs to verify any administrator passwords.  
3.If input a wrong password of more than 4 digits for 10 times, the system will be locked for 2minutes.  
4.It can not delete a single password, only initializes and delete all users.

4.Silent Mode



5.Restore the Factory Setting



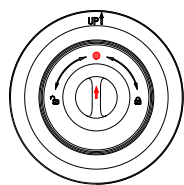
Part 3 Technical Parameters

Name	Parameter Description
USB	Type-C/5V2A
Passwords max	20
Low power warning	3.3V+0.2
Voltage range	3.0~4.2V
Stand-by current	< 50μA
Working current	<500mA
Unlock time	=1.5sec
Working temperature	23 °F~131 °F(-5°C ~55°C)

Part 4 Indicator Lights

Action	Buzzer	Indicator
Passwords added successfully	Beep once	Inactive
Unlocking successful	Long Beep	Stay green for a while
Unlocking failure	Beeps once	Blinks red once
Low battery warning	Beeps twice	Blinks green then blinks red
Resetting- successful	Long Beep	Blinks green once

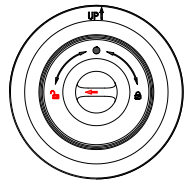
Part 5 Operation Guide



Normal Mode

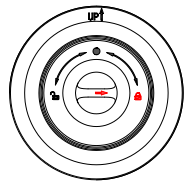
As the figure shows, rotate the thumb turn to circular mark above the thumb turn to switch to normal mode. In the normal mode, after unlocking with the password, the door knob automatically locks in 5 seconds.

Both members and administrators can unlock with their password.



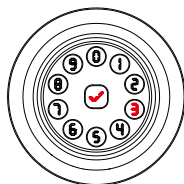
Passage Mode

As shown left, rotate the thumb turn to unlock sign on the left to activate passage mode. After activating passage mode, the door knob is always unlocked.



Privacy Mode

As the figure shows, rotate the thumb turn to lock sign on the right to activate privacy mode. Only the administrators' password can unlock.



Silent Mode

Press digit "3" button + "✓" to activate or turn off silent mode.

FAQ

Q:If the batteries die, how can I open the door?  
A:The smart door knob built-in rechargeable battery. You can use an emergency power supply to charge the smart door knob through or use the backup key to open the door.

Q:Why can't I lock the door?  
A:Check if you turn the Interior Knob to Passage Mode that Passage Mode is unlock Mode, you can't lock the door no matter how.

Q:What happens when the device is reset?  
A:Any 4 to 16 numbers password can unlock the device.  
A: Erase all passwords from the device. Please add at least one administrator password as soon as possible.

Q: How can I unlock K10mini if battery runs out?  
A:Turn the key 90° to unlock, then turn the exterior knob to unlock the door. Or connect a power bank to the knob with Type-C cable as to activate for emergency access.

Q:What is the difference between administrator/user password?  
A:Administrator password can unlock even in the privacy mode, but user cannot unlock in the privacy mode.

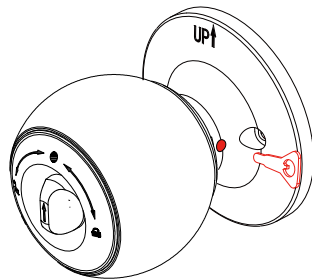
Q:How can I delete a single password(Administrator Password or User Password)?  
A:You can not delete a single password, only initializes and delete all users.

Q:What will happen when I enter a wrong password?  
A:When you enter an incorrect password, the "✓" button will flash red for 2 seconds and the buzzer will beep twice, you can not re-enter the password within 2 seconds.

FAQ

Q:What notification will I receive when the battery is low?  
A:After the password is successfully unlocked (the buzzer beeps once, the button flashes green and then flashes red ).  
A:The remaining power can provide about 50 times to unlock. Please use the power bank to charge in time.

Q:How to remove the interior knob?  
A:Use the Pin insert to the interior knob hole as shown, pull out the interior knob.



Q:What happens if I enter an invalid password?  
A:The device 2 beeps and indicator flash then   
A:If input a wrong password of more than 4 digits for 10 times, the system will be locked for 2 minutes.

FCC WARNING

Any changes or modifications not expressly approved by the party responsible for compliance could void the user's authority to operate the equipment.

Note: The equipment has been tested and found to comply with the limits for a Class B digital device. Pursant to part 15 of the FCC Rules. These limits are designed to provide reasonable protection against harmful interference in residential installation. This equipment generates uses and can radiate radio frequency energy and, if not installed and used in accordance with the instructions, may cause harmful interference to radio communications. However, there is no guarantee that interference will not occur in a particular installation. If this equipment does cause harmful interference to radio or television reception, which can be determined by turning the equipment off and on, the user is encouraged to try to correct the interference by one or more of the fowllowing measures:

- Reorient or relocate the receving antenna.
- Increase the separation between the equipment and receiver.
- Connect the equipment into an outlet on a circuit different from that to which teh receiver is connected.
- Consult the dealer or an experienced radio/TV technician for help.

This device complies with part 15 of the FCC Rules. Operation is subject to the following two conditions:  
(1) This device may not cause harmful interference.  
(2) this device must accept any interference received, including interference that may cause underired operation.

Send Email in 30 days and send us the order number to get:

- ▶Free 1 -YEAR warranty
- ▶Free replacement for any quality issues
- ▶Installation Video for the product

30-Day Redemption Validity

Email: [service@wreolock.com](mailto:service@wreolock.com)

WREO

Customer Service  
Please send email to [service@wreolock.com](mailto:service@wreolock.com)